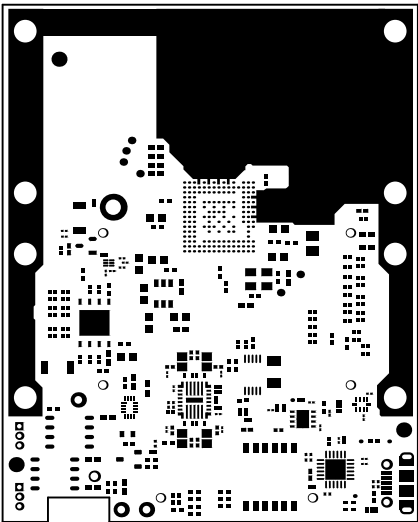
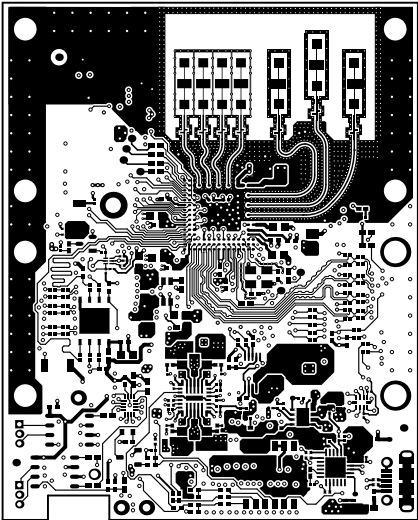


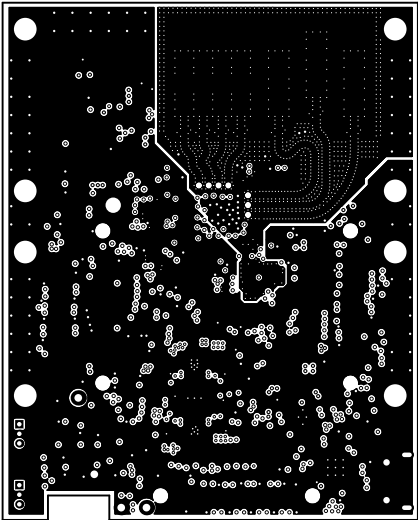
ALL ARTWORK VIEWED FROM TOP SIDE	BOARD #: PROC073	REV: C	SUN REV: Not In VersionControl
LAYER NAME = Top Overlay	TID #: N/A		
PLOT NAME = Top Overlay	GENERATED : 03-03-2020 14:21:59		TEXAS INSTRUMENTS



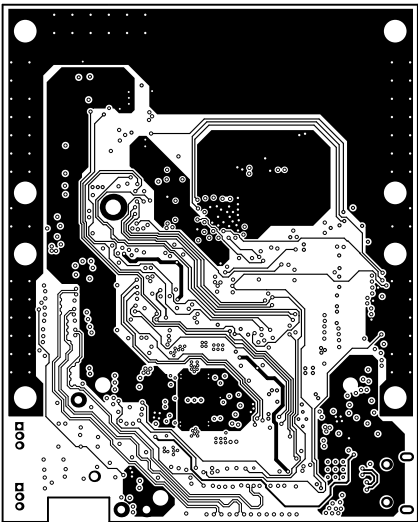
ALL ARTWORK VIEWED FROM TOP SIDE	BOARD #: PROC073	REV: C	SUN REV: Not In VersionControl
LAYER NAME = Top Solder	TID #: N/A		
PLOT NAME = Top Solder Mask	GENERATED : 03-03-2020 14:21:59		TEXAS INSTRUMENTS



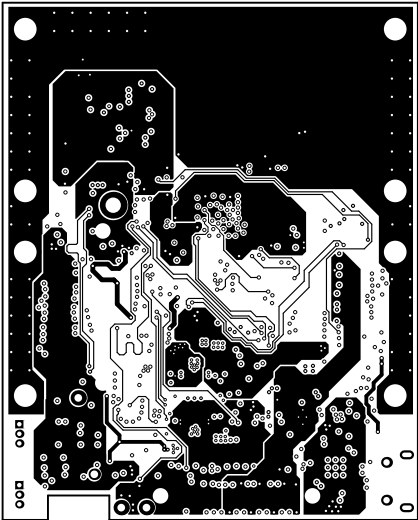
ALL ARTWORK VIEWED FROM TOP SIDE	BOARD #: PROC073	REV: C	SUN REV: Not In VersionControl
LAYER NAME = Top Layer	TID #: N/A		
PLOT NAME = Top Layer	GENERATED : 03-03-2020 14:21:59		TEXAS INSTRUMENTS



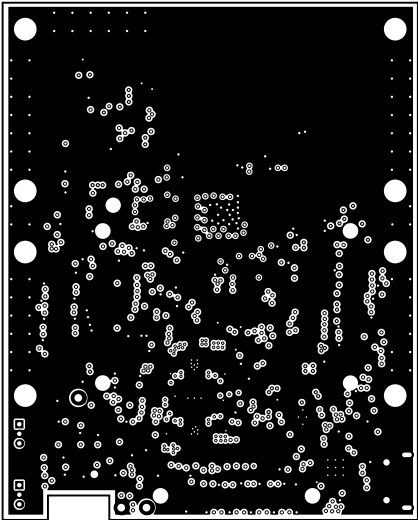
ALL ARTWORK VIEWED FROM TOP SIDE	BOARD #: PROC073	REV: C	SUN REV: Not In VersionControl
LAYER NAME = L2_GND	TID #: N/A		
PLOT NAME = Signal Layer 1	GENERATED : 03-03-2020 14:21:59		TEXAS INSTRUMENTS



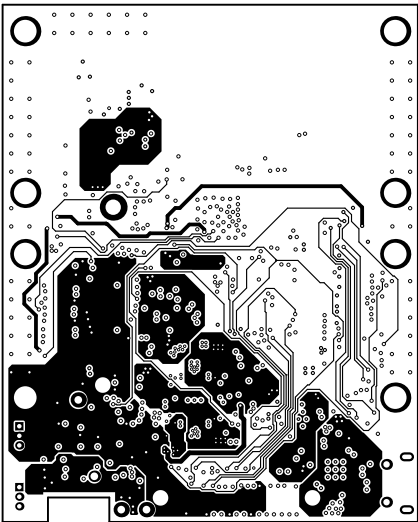
ALL ARTWORK VIEWED FROM TOP SIDE	BOARD #: PROC073	REV: C	SUN REV: Not In VersionControl
LAYER NAME = L3_SIGNAL 1	TID #: N/A		
PLOT NAME = Signal Layer 2	GENERATED : 03-03-2020 14:21:59		TEXAS INSTRUMENTS



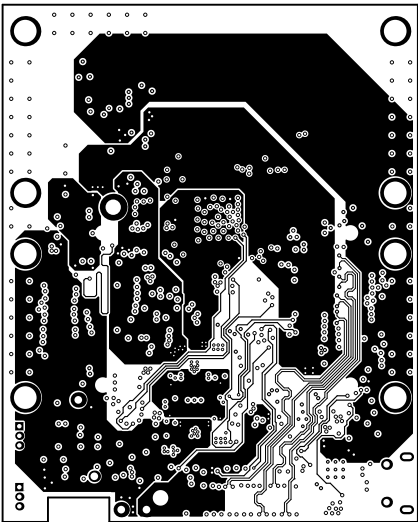
ALL ARTWORK VIEWED FROM TOP SIDE	BOARD #: PROC073	REV: C	SUN REV: Not In VersionControl
LAYER NAME = L5_SIGNAL 3	TID #: N/A		
PLOT NAME = Signal Layer 3	GENERATED : 03-03-2020 14:21:59		TEXAS INSTRUMENTS



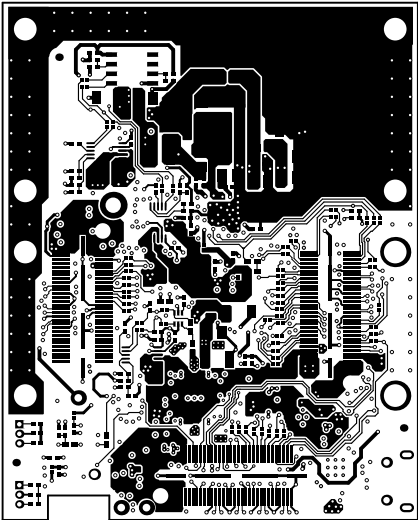
ALL ARTWORK VIEWED FROM TOP SIDE	BOARD #: PROC073	REV: C	SUN REV: Not In VersionControl
LAYER NAME = L7_GND	TID #: N/A		
PLOT NAME = Signal Layer 4	GENERATED : 03-03-2020 14:21:59		TEXAS INSTRUMENTS



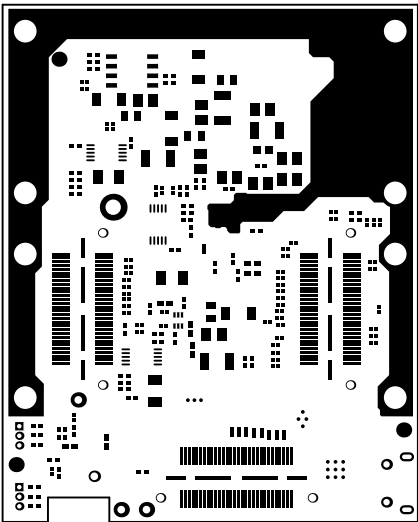
ALL ARTWORK VIEWED FROM TOP SIDE	BOARD #: PROC073	REV: C	SUN REV: Not In VersionControl
LAYER NAME = L4_SIGNAL 2	TID #: N/A		
PLOT NAME = Signal Layer 5	GENERATED : 03-03-2020 14:21:59		TEXAS INSTRUMENTS



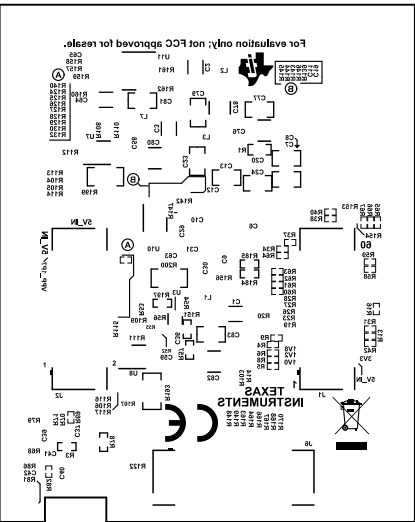
ALL ARTWORK VIEWED FROM TOP SIDE	BOARD #: PROC073	REV: C	SUN REV: Not In VersionControl
LAYER NAME = L6_SIGNAL 4	TID #: N/A		
PLOT NAME = Signal Layer 6	GENERATED : 03-03-2020 14:21:59		TEXAS INSTRUMENTS



ALL ARTWORK VIEWED FROM TOP SIDE	BOARD #: PROC073	REV: C	SUN REV: Not In VersionControl
LAYER NAME = Bottom Layer	TID #: N/A		
PLOT NAME = Bottom Layer	GENERATED : 03-03-2020 14:21:59		TEXAS INSTRUMENTS



ALL ARTWORK VIEWED FROM TOP SIDE	BOARD #: PROC073	REV: C	SUN REV: Not In VersionControl
LAYER NAME = Bottom Solder	TID #: N/A		
PLOT NAME = Bottom Solder Mask	GENERATED : 03-03-2020 14:22:00		TEXAS INSTRUMENTS



8

8

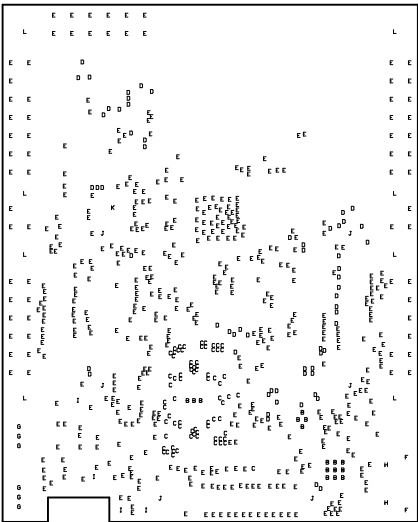
8

8

Symbol	Hit Count	Finished Hole Size	Plated	Hole Type	Physical Length	Rout Path Length	Drill Layer Pair	Tolerance
B	16	7.87mil (0.200mm)	PTH	Round	-	-	Top Layer - Bottom Layer	+0/-7.874mil
C	74	8.00mil (0.203mm)	PTH	Round	-	-	Top Layer - Bottom Layer	+0/-8mil
D	62	10.00mil (0.254mm)	PTH	Round	-	-	Top Layer - Bottom Layer	+0/-10mil
E	510	12.20mil (0.310mm)	PTH	Round	-	-	Top Layer - Bottom Layer	+0/-12.2mil
G	6	23.62mil (0.600mm)	PTH	Round	-	-	Top Layer - Bottom Layer	+/-3mil
F	2	23.62mil (0.600mm)	PTH	Slot	51.18mil (1.300mm)	27.56mil (0.700mm)	Top Layer - Bottom Layer	+/-3mil
H	2	33.47mil (0.850mm)	PTH	Round	-	-	Top Layer - Bottom Layer	+/-3mil
I	4	40.00mil (1.016mm)	PTH	Round	-	-	Top Layer - Bottom Layer	+/-3mil
J	6	40.16mil (1.020mm)	NPTH	Round	-	-	Top Layer - Bottom Layer	+/-2mil
K	1	80.00mil (2.032mm)	PTH	Round	-	-	Top Layer - Bottom Layer	+/-3mil
L	8	118.11mil (3.000mm)	PTH	Round	-	-	Top Layer - Bottom Layer	+/-3mil
691 Total								
Slot definitions : Rout Path Length = Calculated from tool start centre position to tool end centre position. Physical Length = Rout Path Length + Tool Size = Slot length as defined in the PCB layout								

Drill Table: Layer 1 To Layer 2

8



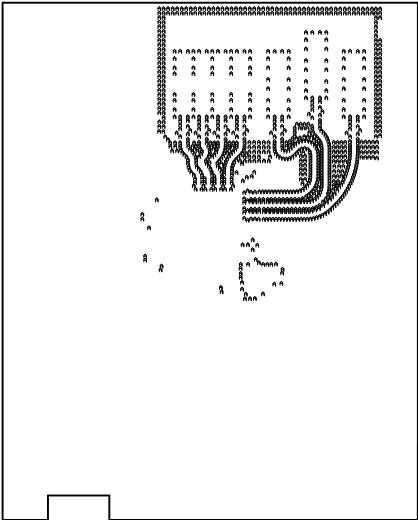
ALL ARTWORK VIEWED FROM TOP SIDE	BOARD #: PROC073	REV: C	SUN REV: Not In VersionControl
LAYER NAME = Drill Drawing	TID #: N/A		
PLOT NAME = Drill Drawing	GENERATED : 03-03-2020 14:22:00		TEXAS INSTRUMENTS

Drill Table: Top Layer to Bottom Layer

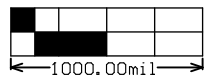
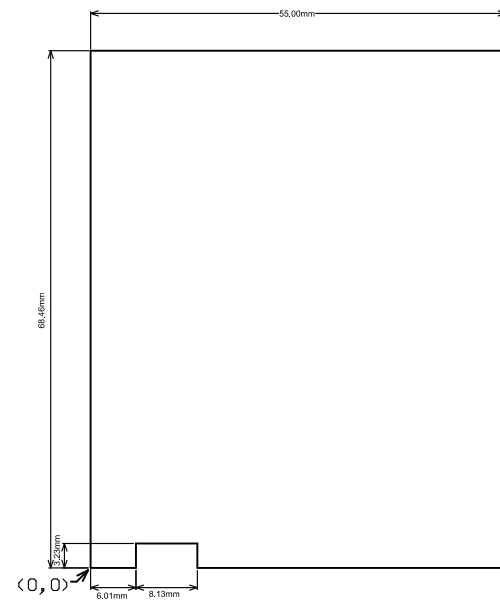
8
8
8
8

Drill Table: Layer 1 To Layer 2

Symbol	Hit Count	Finished Hole Size	Plated	Hole Type	Physical Length	Rout Path Length	Drill Layer Pair	Tolerance
8 A	981	5.90mil (0.150mm)	PTH	Round	-	-	Top Layer - L2_GND	+0/-5.9mil
	981 Total							



ALL ARTWORK VIEWED FROM TOP SIDE	BOARD #: PROC073	REV: C	SUN REV: Not In VersionControl
LAYER NAME = Drill Drawing	TID #: N/A		
PLOT NAME = Drill Drawing	GENERATED : 03-03-2020 14:22:01		TEXAS INSTRUMENTS



ALL ARTWORK VIEWED FROM TOP SIDE	BOARD #: PROC073	REV: C	SUN REV: Not In VersionControl
LAYER NAME = M2 Board Dimensions	TID #: N/A		
PLOT NAME = Board Dimensions	GENERATED : 03-03-2020 14:22:01		TEXAS INSTRUMENTS